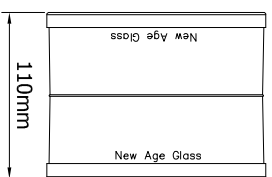
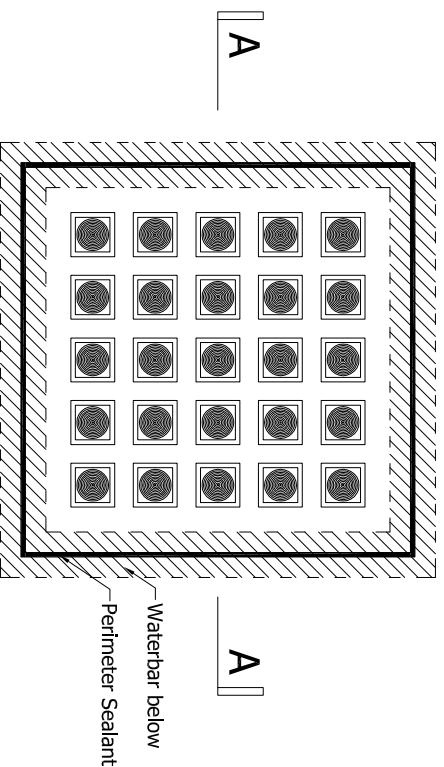
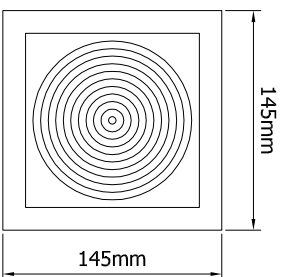


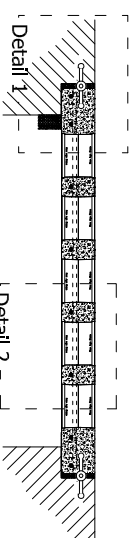
Technical Details - Roof Lights - Structural Details



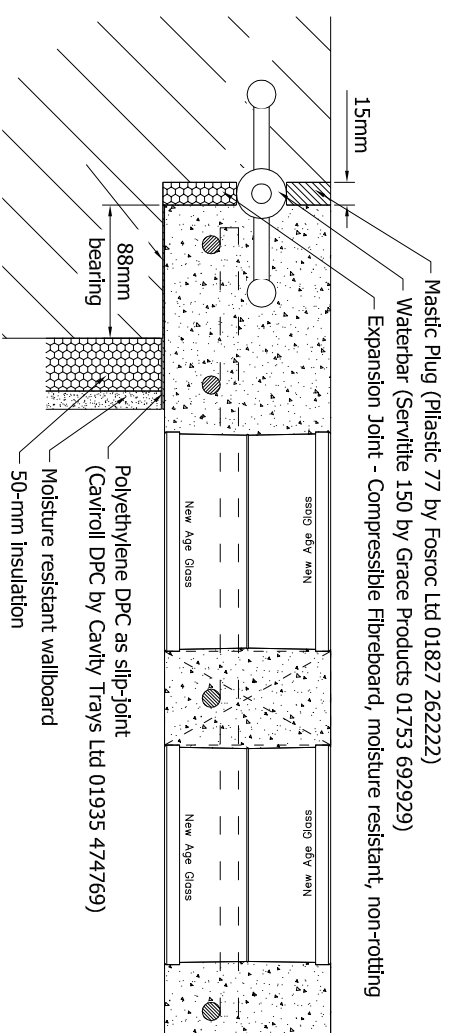
Seves Technology Hollow Glass Block
145x145-mm² by 110-mm thick
Ref: BG 1414/11 Circles



General Layout *Scale 1:25*

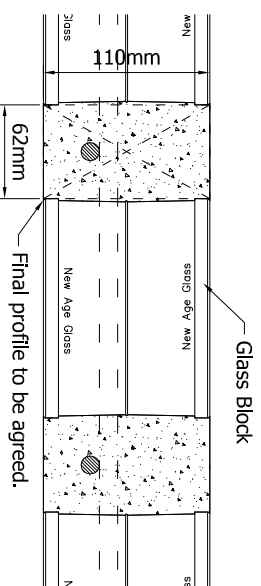


Section A-A *Scale 1:25*



1: Edge Bearing Detail *Scale 1:5*

Refer enclosed product Data Sheets for material use, installation and for Health and Safety.



2: Grillage Detail *Scale 1:5*

Reinforced concrete grillage beam. Broken line shows effective area of beam used in calculations. Minimum concrete cover 25-mm. 12-mm deformed stainless-steel bar shown. Concrete strength 40-N/mm². SBR additive added for waterproof qualities. Polypropylene fibre reinforcement for crack control.

New Age Glass

Unit 4, Phoenix Business Centre, Spur Road, Chichester, West Sussex, PO19 8PN
01243 720414 - www.newageglass.co.uk