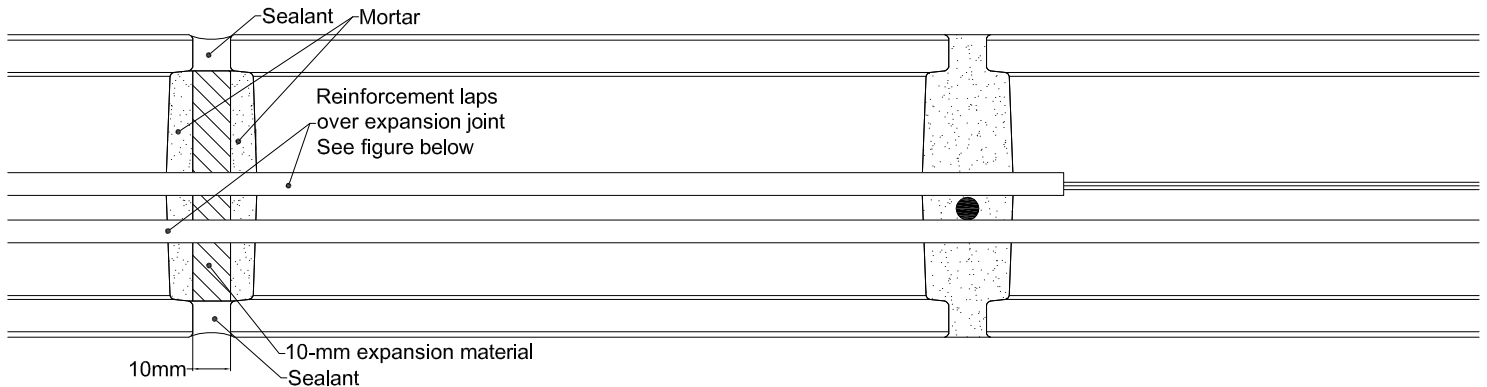
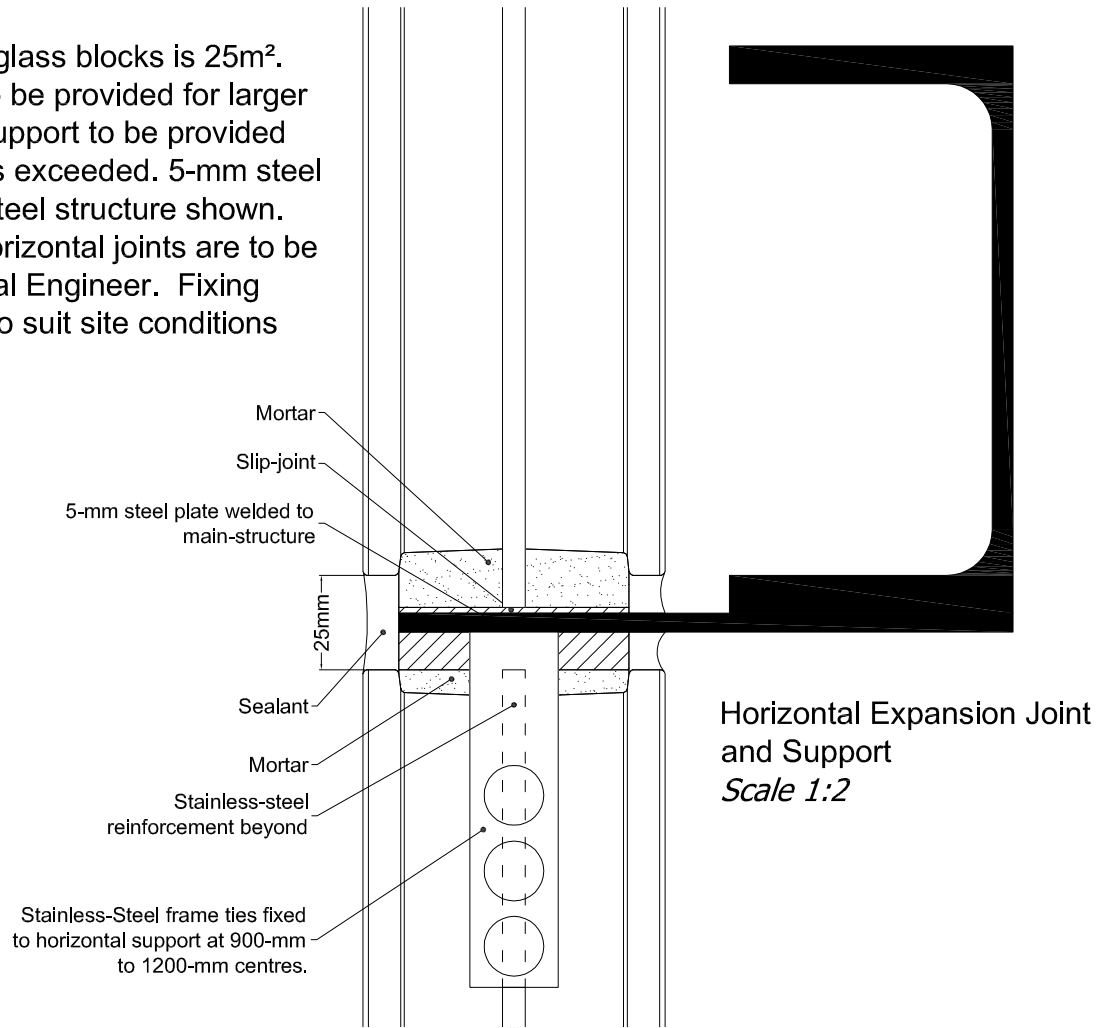


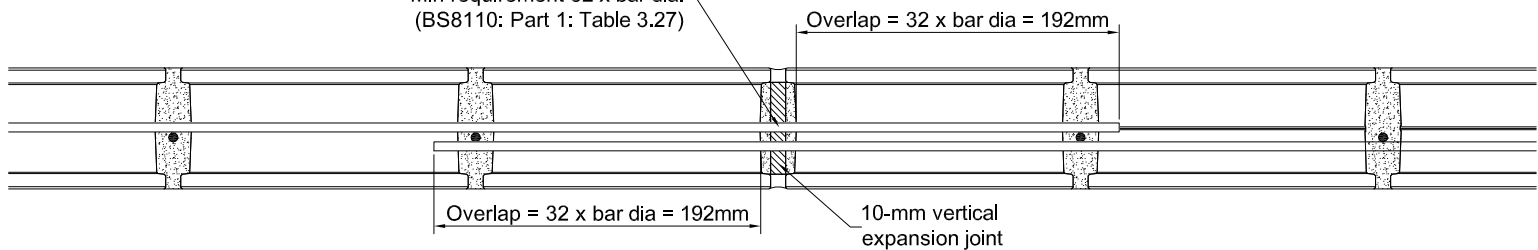
Technical Details - Mortar - Joint and Fixing Details - Expansion and Support

Maximum panel size for glass blocks is 25m². Vertical expansion joints to be provided for larger panel sizes. Horizontal support to be provided when safe height of panel is exceeded. 5-mm steel welded to underside of steel structure shown. Other methods exist. All horizontal joints are to be designed by a Structural Engineer. Fixing methods are adaptable to suit site conditions



Vertical Expansion Joint
Scale 1:2

Reinforcement to extend beyond the expansion joint.
Min requirement 32 x bar dia.
(BS8110: Part 1: Table 3.27)



Anchorage at Expansion Joint
Scale 1:5

New Age Glass

Unit 4, Phoenix Business Centre, Spur Road, Chichester, West Sussex, PO19 8PN
01243 720414 - www.newageglass.co.uk

Sheet M-Expansion

Issue Date: 19 October 2009
Drawn DB